

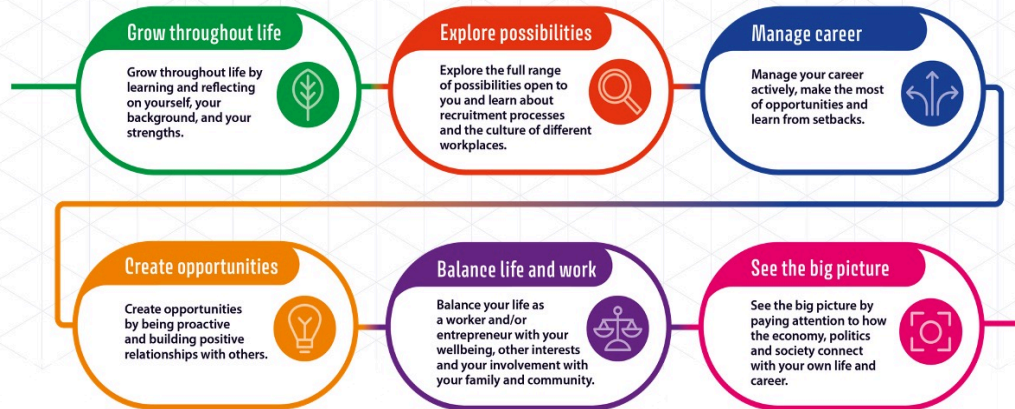


Careers Education Pathways

The Careers Development Institute (CDI's) Career Development Framework describes six career development skills that people need to have positive careers. ALP Schools careers education from Primary to Post 16 is based on the CDI's guidance, ensuring that careers, employability and enterprise are the key areas of successful careers education. The framework can be found here -

https://www.thecdi.net/write/CDI_98-Framework-skills_by_key_stage-A3_portrait-web.pdf

The six learning areas



	Careers	Employability	Enterprise
Primary	Learners follow the national curriculum and the Jigsaw Program of education - http://www.alpleicester.co.uk/wp-content/uploads/sites/4/2021/11/PSHE-Secondary-snapshot-jigsaw.pdf	Primary learners are introduced to the world of work. Identifying jobs, the community, key people and aspirations	Young Enterprise Young Money - Primary lesson plans are delivered from ages 6 to 11, they cover topics from the Primary Planning Framework and are used to deliver real and relevant financial education to our learners
Secondary	Learners complete a range of vocational subjects to open up opportunities and develop interest. All subjects delivered in school have a careers link. Our careers education is based on the following framework - https://www.thecdi.net/write/CDI_98-Framework-skills_by_key_stage-A3_portrait-web.pdf Learners have at least one meaningful work experience opportunity	Learners complete an NCFE Entry Level or level 1 Award in Employability Skills. Units may include Mindset, Application Skills, CV writing, teamwork, job search skills and more. Alternatively learners can follow the TLM Life, Work and Well-Being Pathways - These are available from Entry Level 1 to Level 2 Through Young Enterprise Young Money learners complete an Employability Masterclass	We follow the Young Enterprise Young Money program of education. Secondary lesson plans have been designed to be delivered from age 11 to 19, they cover topics from the Secondary Planning Framework and are used to deliver real and relevant financial education to our learners. Learners study the NCFE Entry Level 3 or Level 1 in Developing Enterprise Skills
Post-16	Learners specialise in their vocational and academic choices. They progress in levels and knowledge. Learners have a second work experience opportunity	Once learners have complete the Award they have the opportunity to progress to the Certificate in Employability Skills where a range of units are available Alternatively these continue to gain higher levels and more units in the TLM offer	Young Enterprise Young Money lessons continue into Post-16 learning

SEND Pathways

ALP Schools have access to Talentino and Talentino More - These platforms are a full package to support Careers Leads, Careers Champions and those teaching careers education. Designed specifically for SEND schools the platform provides the following:

- Improve our Careers strategy and overall structure
- Equip us with SEND specialist careers resources
- Train staff to be more confident delivering careers guidance to SEND students
- Increase the number of Gatsby Benchmarks achieved in each of our schools, improving the range of destinations our learners consider

The young Enterprise Young Money Programs and services can be found here -
<https://www.young-enterprise.org.uk/wp-content/uploads/2024/08/YE-PS-Brochure-24-25-final.pdf>

